

A GUIDE TO BRYOLOGICAL HOTSPOTS IN EUROPE

ed. by Jan-Peter Frahm

Archive for Bryology vol. 5
Bonn 2006

3. Madeira

by Jan-Peter Frahm

Madeira is bryologically insofar very interesting, as it harbours (like the other Macaronesian Islands) relics of the bryoflora of the Tertiary of continental Europe. Originated in the Tertiary at various times, these volcanic islands were mainly colonized from Europe. Whereas many species got extinct in Europe during the glaciations of the Quaternary, these elements were able to survive in these islands. So we are faced there with an ancient bryoflora, especially in the laurel forests, amongst other phytogeographic elements, mainly mediterranean species.

Madeira is situated about 1000 kms apart from the continent, which is more than the Canary Islands but less than the Azores. This means that it is less humid than the Azores but more humid than the Canary Islands. It is also the most forested island of the Macaronesian Islands, which is the reason the wooded interior is part of the world heritage since 1982. The status of the interior of Madeira as a National Park requires a permit to collect. One can apply for collecting and export permits from the director of the Parque Natural de Madeira, Susana Fontinha (susanafontinha.sraa@gov-madeira.pt).

Six areas of special interest are listed in the „Red Data Book of European Bryophytes“ (Stewart 1995), but large other areas are also very valuable.

STEWART, N. 1995. Red Data Book of European Bryophytes. European Committee for Conservation of Bryophytes, Trondheim, 291 pp.

- Blockeel, T. L., 1999. New national and regional bryophyte records, 1. *Lejeunea canariensis* Steph. Madeira., *Journal of Bryology* 21: 161.
- Cardot, J., 1897. Mosses of the Azores and Madeira., 8th Ann. Rep. Missouri Bot Garden, 75 Pp.
- Casas, C., Brugues, M., Cros, R.M., Sergio, C., 1985. Cartografia de Briofits Peninsula Iberica i les Illes Balears, Canaries, Acores i Madeira Fasc. I, Barcelona.
- Casas, C., Brugues, M., Cros, Rosa M., Sergio, C., 1989. Bryophyte Cartography Iberian Peninsula, Balearic and Canary Islands, Azores and Madeira, fasc. II mit Karten 51-100, Barcelona 1989 - 153 S. und 50 Karten im Schuber, Oktav Hln.
- Casas, C., Brugues, M., Cros, R.M., Sergio, C., 1992. Cartografia de Briofits Peninsula Iberica i les Illes Balears, Canaries, Acores i Madeira Fasc. III, Barcelona.
- Casas, C., M. Brugues, R. M. Cros & C. Sergio, 1996, Cartografia de briofits Peninsula Iberica i les Illes Balears, Canaries, Acores i Madeira Fasc. IV: 1-143, Cartografia 4: 1-143
- Fontinha, S. & M. C. Boisselier-Dubayle, 1997. Isozyme analysis in *Porella* (Hepaticae, Porellaceae), from Madeira. XII Simposio de Botanica Criptogamica, Libro de Resumenes pp. 279-280.
- Fontinha, S., C. Sergio & I. Silva, 1997. Algumas novidades para a brioflora das Ilhas Desertas (Arquipelago da Madeira)., *Portugaliae Acta Biologica, Serie B, Sistemática, Ecologia, Biogeografia e Paleontologia* 17: 265-266
- Fontinha, S., M. C. Boisselier, 1998. Genetic variation and diversification in *Porella* from Madeira., XVI. International Botanical Congress-Abstracts Addendum p. 10. St. Louis, MO.
- Fontinha, S., 1995. Dados preliminares sobre o genero *Porella* (Porellaceae, Hepaticae) na Madeira. Simposio Nacional de Botanica Criptogamica, Resumenes XI: 251-252
- Hedenaes, L., 1992. Notes on Madeiran *Pseudotaxiphyllum*, *Brachythecium* and *Rhynchostegiella* species (Bryopsida)., *Nova Hedwigia* 54: 447-457.

- Hedenäs, L. & C. Sérgio, 1992. Habitat and distribution of *Cyrtohypnum atlanticum* (Hedenäs) Hedenäs & Sérgio in Madeira Island., *Portugaliae Acta Biologica. Serie B. Systematica, Ecologia, Biogeografica e Paleontologia* 16: 139-146.
- Hedenäs, L., 1999. New national and regional bryophyte records, 1. *Eurhynchium striatum* (Hedw.) Schimp. Madeira. *Journal of Bryology* 21: 161.
- Hedenäs, L. 1992. Flora of Madeiran Pleurocarpous mosses (Isobryales, Hypnobryales, Hookeriales), . *yophytorum Bibliotheca* 44, Stuttgart. 165 S.
- Holmen, K. & Rasmussen, K., 1971. Madeira Mosser., Copenhagen.
- Koponen Timo, Sergio Cecilia, 2001. Solving the identity of the large *Plagiomnium* (Musci) from Madeira (Portugal): *P. undulatum* var. *madeirense* T. Kop. & C. Sergio, *Cryptogamie, Bryologie* 22 (1): 13 - 18.
- Luisier, A., 1938. A flora briologica da Madeira., *Boletim Soc. Broteriana, Ser. 2*, 13: 69-80.
- Luisier, A., 1942. *Bryoxiphium norvegicum* (Brid.) da Madeira., *Bull. Soc. Portug. Sci. Nat.* 13, Suppl. 2: 179-182.
- Niekoop, J. & T. Arts, 1995. Additions to the bryophyte flora of Madeira., *Lindbergia* 20: 35-39.
- Nobrega, M. de , 1990. Contribucao para flora das muscineas de Madeira., *Bol. Museu Municipal do Funchal* 42: 17-38.
- Ochyra, R., 1999. *Crassiphyllum* (Thamnobryaceae), a new moss genus from Madeira, *Fragm. Flor. Geobot.* 36 (1): 71-79
- Persson, H., 1939. Bryophytes from Madeira., *Bot. Notiser* 4: 566-590.
- Schumacker, R. 1999. Two new liverworts for Europe in Macaronesia: *Odontoschisma prostratum* (Sw.) Trevis. on the Azores and *Jungermannia callithrix* Lindenb. & Gottsche on the Azores and Madeira. , *Tropical Bryology* 17: 115-127.
- Schwab, G. & Haustein, B., 1984. Die von Dr. W. Hillebrand auf den Kanaren und Madeira gesammelten Moose (Bryophyta: Hepaticae et Musci), *Courier Forsch.-Inst. Senckenberg (Frankfurt)* 71: 113-124.
- Sergio, C. & Fontinha, S., 1992. Notulae bryoflorae macaronesicae II. 3 - *Dicranum fuscescens* Turn. novo musgo para a flora da Ilha da Madeira., *Portug. Acta Biol. (B)* 15: 420-421.
- Sérgio, C. & M. Nóbrega, 1989. Notulae bryoflorae Macaronesicae II. Algumas novidades para a flora briológica des Ilhas Desertas (Arquipélago da Madeira), *Portugaliae Acta Biologica, Série B* 15: 419-420.
- Sergio, C. & Nobrega M., 1985. Notulae Bryoflorae Macaronesicae. I. 4.-Novos elementos para a flora briologica da Madeira. *Portugaliae Acta Biologica, Serie B* 14: 176-179
- Sergio, C. & Nobrega, M., 1985. Novos elementos para a flora briológica da Madeira. Notulae bryoflorae macaronesiae I., *Portug. Acta Biol. (B)* 14: 176-179.
- Sérgio, C. & Perold, S., 1992. A new species of *Riccia* L. from the island of Madeira, *Riccia atlantica*, sp. nov., *J. Bryol.* 17: 127-132
- Sergio, C. & S. Fontinha, 1991. Significado biogeografico de briofitos novos ou pouco conhecidos para a ilha da Madeira. *Simposio Nacional de Botanica Criptogamica, Resumenes IX*: 251
- Sergio, C. & S. Fontinha, 1994. Natural and semi-natural bryophyte flora of the coastal dry zones of Madeira Island., *Boletim do Museu Municipal do Funchal* 46: 95-144. 34 fig. 1 tab.
- Sergio, C. & S. Fontinha, 1994. Significado biogeografica de briofitos novos ou pouco conhecidos para a Ilha da Madeira., *Studia Botanica, Univeridad de Salamanca* 13: 195-198. 1 fig.
- Sergio, C., J. Vana & S. Fontinha, 1994. Nova especie para a brioflora da Madeira, *Cephaloziella rubella* (Nees) Warnst. e *Gymnocolea inflata* (Huds.) Dum., *Revista de Biologia* 15: 182.
- Sergio, C., R. Mues, E. Sauer & M. Sim-Sim, 1994. *Hygrobiella laxifolia* (Hook.) Spruce uma nova hepatica para a ilha da Madeira e para a Macaronesia., *Revista de Biologia* 15: 183.
- Sergio, C., R. Schumacker, S. Fontinha & M. Sim-Sim, 1990. [Abstract] Evaluation of the status of the bryophyte flora of Madeira, with reference to endemic and threatened European species., *Endangered bryophytes in Europe - causes and conservation. Uppsala Symposium Abstracts. The Swedish Committee for Conservation of Endangered Bryophytes*, p. 21.
- Sergio, C. 1985. Notulae bryoflorae Macaronesicae. I. 1.-Consideracoes sobre a presenca de *Frullania muscicola* Steph. e *Frullania ericoides* (Nees) Mont. nos Acores e Madeira., *Portugaliae Acta Biologica, Ser. B* 14: 161-168
- Sergio, C., 1973. Hepaticas da Ilha da Madeira, *Colecção do Prof. C. N. Tavares., Portug. Acta Biol. Ser. B*, 12: 1-4, 179-192.
- Sergio, C., Schumacker, R., Fontinha, S. & Sim-Sim, M., 1992. Evaluation of the status of bryohpyte flora of Madeira with reference to endemic and threatened European species, *Biological Conservation* 59: 223-231
- Sim-Sim, M. & C. Sergio, 1991. Estudio taxonomico e corologico do genero *Frullania* (L.) Dum. no arquipelago da Madeira. *Simposio Nacional de Botanica Criptogamica, Resumenes IX*: 252
- Sim-Sim, M. & Sérgio, C., 1992. Estudo taxonómico e corológico do género *Frullania* Raddi no arquipélago da Madeira, *Portug. Acta Biol., Ser. B*, 16: 147-172.
- Sim-Sim, M., S. Fontinha, R. Mues & U. Lion 2000. A new *Frullania* species (subg. *Frullania*) from Deserta Grande, Madeira archipelago, *Frullania sergiae* sp. nov., *Nova Hedwigia* 71: 185-193.

- Sim-Sim, M., S. Fontinha, R. Mues, 1999. Taxonomical, biochemical and ecological aspects of Madeira *Frullania* Raddi species., XVI International Botanical Congress-Abstracts p. 327. St. Louis, MO.
- Sim-Sim, M., 1995. O genero *Frullania* Raddi (Hepaticae) em Portugal e na Madeira. Estudo biosistemático e ecológico, xi + 304 pp. + anexo Universidade de Lisboa, Lisbon, Portugal
- Sim-Sim, M., 1997. Some morphological aspects of Madeiran *Frullania* Raddi species., *Portugaliae Acta Biologica*, Serie B, Sistemática, Ecologia, Biogeografia e Paleontologia 17: 47-56
- Sim-Sim, M., 1999. The genus *Frullania* Raddi (Hepaticae) in Portugal and Madeira. ,20: 83-144. 29 fig. 1 tab. [Nine species from the region.]
- Sjoegren, E. & Hallingbäck, T., 1977. A bryological bibliography of the Macaronesian island groups of the Azores, Madeira, Canaries and Cape Verde., *Medd. Växtbiol. Inst. (Uppsala)* 7: 1-16.
- Sjogren E., 1975. Epiphyllous bryophytes of Madeira., *Svensk. Bot. Tidskr.* 69: 217-288
- Sjögren, E., 2001. Distribution of Azorean bryophytes up to 1999, their island distribution and information on their presence elsewhere, including Madeira and the Canary Islands., *Boletim do Museu Municipal do Funchal Suppl. No. 7*, 2001, 89 SS.
- Winter, Hermann, Beiträge zur Kenntnis der Laubmoosflora von Madeira und Teneriffa.



Asterella africana



Corsinia coriandrina



Dumortiera hirsuta



Frullania teneriffae



Gongylanthus ericetorum



Jubula hutchinsiae



Lunularia cruciata



Marchantia paleacea



Phaeoceros caucasicus



Plagiochasma rupestre



Porella canariensis



Saccogyna viticulosa



Andoa bertholetiana



Cyrtohypnum atlanticum



Ditrichum punctulatum



Echinodium



Echinodium setigerum



Echinodium spinosum



Epipterygium



Fissidens luisieri



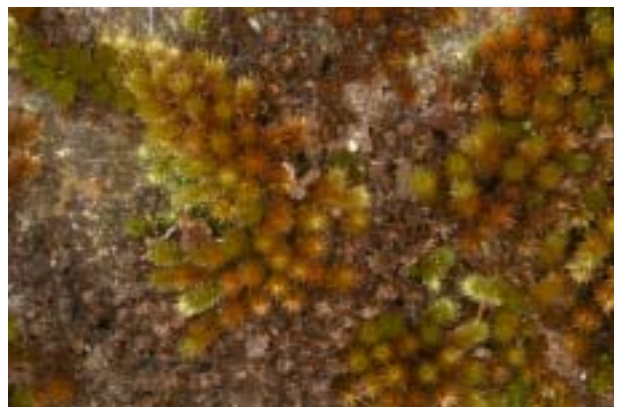
Hypnum uncinulatum



Lepidopilum virens



Leucodon treleasei



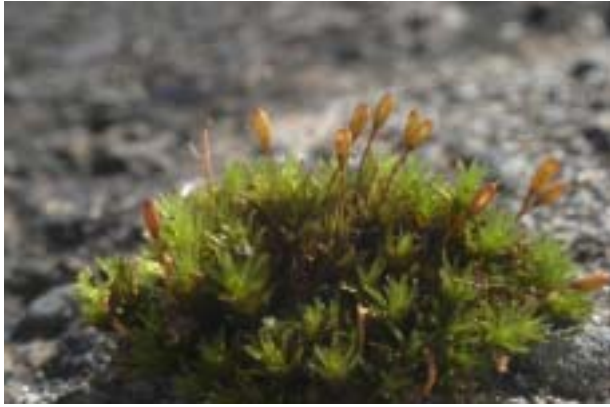
Myurium hochstetteri



Neckera cephalonica



Plagiomnium maderense



Ptycomitrium nigrescens



Tetrastichium fontanum



Thamnobryum maderense



Uloa calvescens



Thamnobryum fernandesii

